



201 Flaxton Drive Mapleton QLD

3 3 2

Welcome to 201 Flaxton Drive, Mapleton, an inviting Hinterland retreat where privacy, serenity and scenic surrounds come together. Set on 2.02 Ha this property offers the ultimate in privacy and seclusion without sacrificing convenience. Whether you're enjoying a peaceful event by the pool or hosting a dinner party on the deck, you'll experience the best of Hinterland living with breathtaking views.

Type : House
Price : \$1,995,000
Building Size : 175 sqm
Land Size : 2.02 ha
View : <https://www.brantproperty.com.au/sale/qld/sunshine-coast/mapleton/residential/house/8562670>

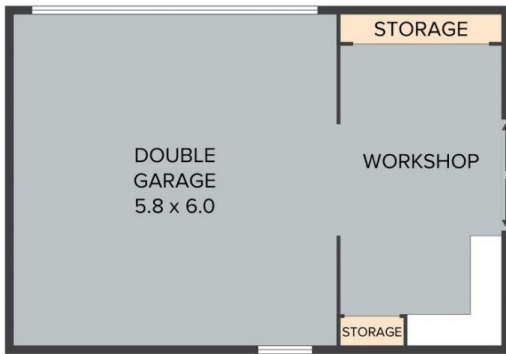
Upstairs Features Include -

- North facing home with high ceilings, large windows and doors to ensure ample natural light and airflow while showcasing the stunning views over the Hinterland and out to the coast

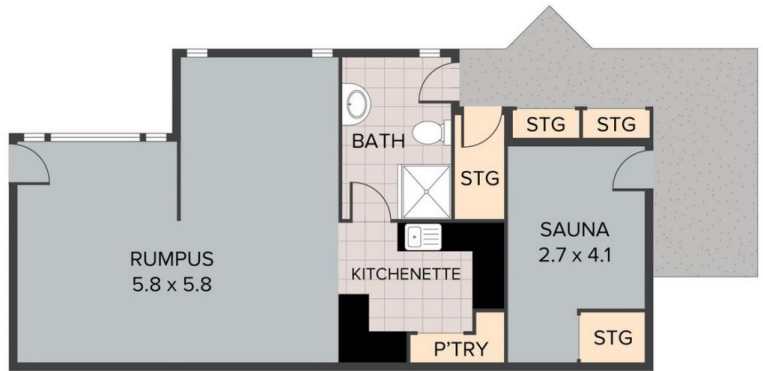
[For full version visit the website](#)



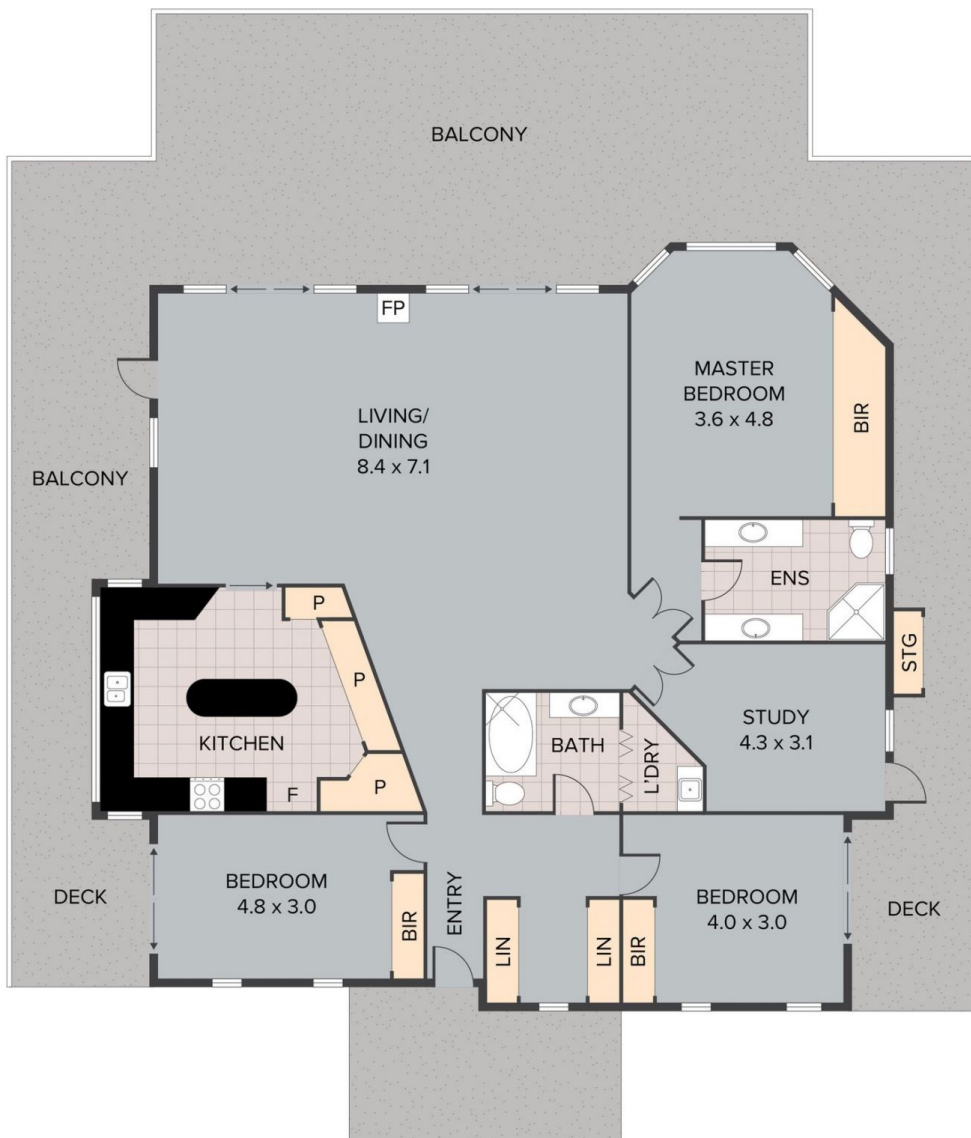
Susan Brant
0428 572 170



(NOT IN POSITION)



(NOT IN POSITION)



201 Flaxton Drive, Mapleton

TOTAL APPROX. FLOOR AREA 175 SQ.M

Whilst every attempt has been made to ensure the accuracy of the floor plan contained here, measurements of doors, windows, rooms and any other items are approximate and no responsibility is taken for any error, omission, or misstatement. This plan is for illustrative purposes only and should be used as such by any prospective purchaser.

BRANT
— Property —