



135 Ansell Road Witta QLD

3 2 3

Charming Rural Retreat - Just Minutes from Magical Maleny!

Tucked away at the peaceful end of a no-through road, this enchanting character Queenslander offers the perfect blend of privacy, nature, and versatile living in the heart of beautiful Witta. Set on a lush 8,000m<sup>2</sup> (2-acre) block, the property features a delightful mix of open, level lawns and dappled rainforest, your own private haven just minutes from the vibrant Hinterland township of Maleny.

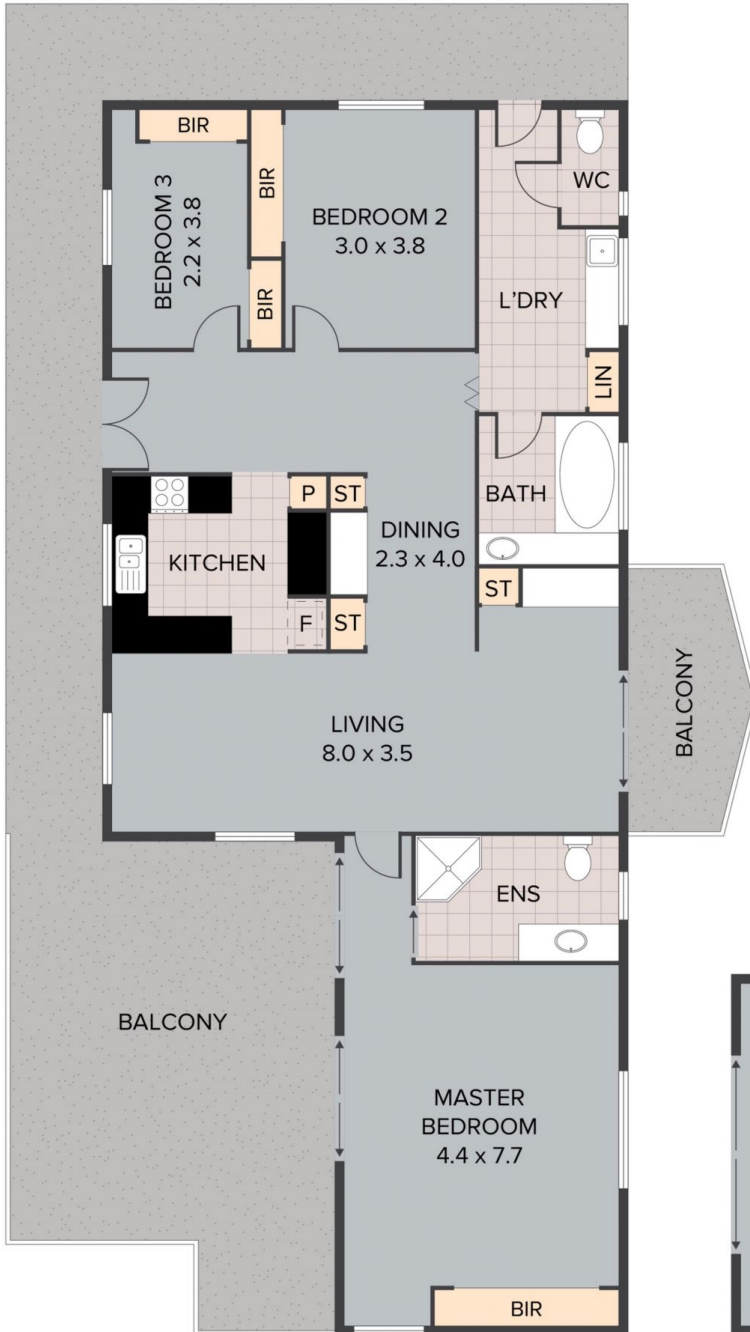
This timeless residence exudes warmth and charm, showcasing classic Queenslander features with the added benefit of a studio, ideal for a workshop, artist/potters studio or work from home space. Whether you're seeking a tranquil tree-change, a weekend retreat, or a lifestyle

[For full version visit the website](#)

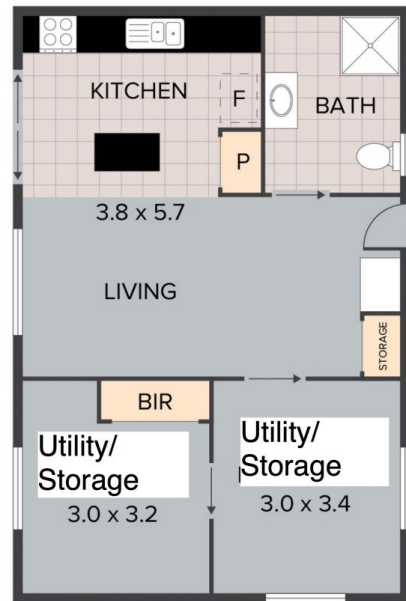
**Type** : House  
**Price** : \$ 1,260,000  
**Building Size** : 134 sqm  
**Land Size** : 8000 sqm  
**View** : <https://www.brantproperty.com.au/sale/qld/south/witta/residential/house/8370946>



**Susan Brant**  
0428 573 170



(NOT IN POSITION)



GRANNY FLAT  
(NOT IN POSITION)



(NOT IN POSITION)

135 Ansell Road, Witta  
TOTAL APPROX. FLOOR AREA 134 SQ.M

Whilst every attempt has been made to ensure the accuracy of the floor plan contained here, measurements of doors, windows, rooms and any other items are approximate and no responsibility is taken for any error, omission, or misstatement. This plan is for illustrative purposes only and should be used as such by any prospective purchaser.