



937 Maleny-Montville Road BALMORAL RIDGE QLD

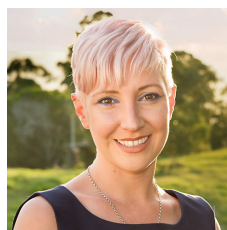
9 🏠 7 🚗 4 🚘

Large Home, Five Cottages

This is the lifestyle change you have been waiting for - a home & accommodation business in the stunning Sunshine Coast Hinterland. All the hard work is done, all you need to do is put your stamp on this beautiful property and highly successful business.

This well-established business boasts five individual council approved cottages with a large two storey four bedroom home. All within a 4000m2 block, the grounds and gardens have been well designed and meticulously landscaped to ensure minimal upkeep. The adjoining rural block and farmlands extends the calming and expansive rural views for guests and Owners.

**Type** : House  
**Land Size** : 4000 sqm  
**View** : <https://www.brantproperty.com.au/sale/qld/south/balmoral-ridge/residential/house/6983310>



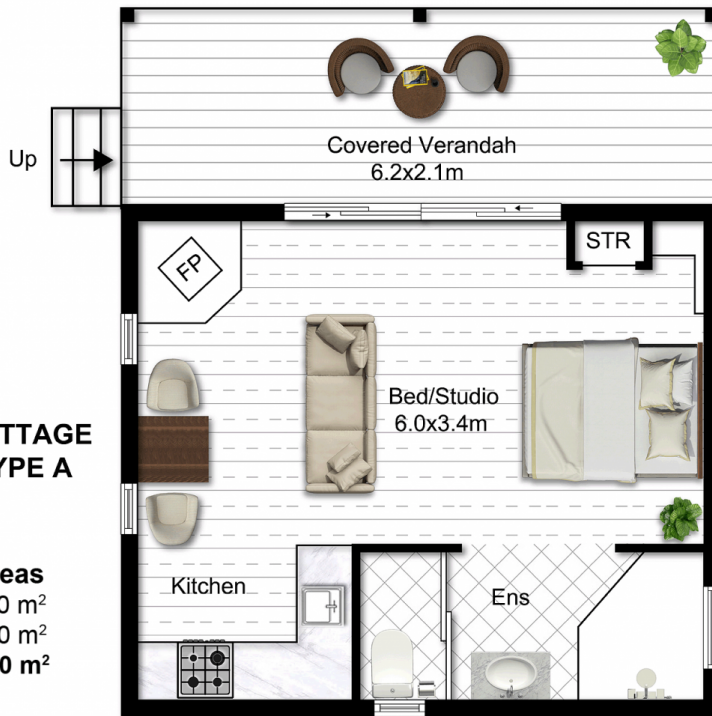
Dee Bernhardt

[For full version visit the website](https://www.brantproperty.com.au)

# 937 Maleny Montville Road BALMORAL RIDGE

## COTTAGE TYPE A

**Approximate Areas**  
 Internal: 32.0 m<sup>2</sup>  
 External: 13.0 m<sup>2</sup>  
 Total Area: 45.0 m<sup>2</sup>



## COTTAGE TYPE B

**Approximate Areas**  
 Internal: 38.0 m<sup>2</sup>  
 External: 17.0 m<sup>2</sup>  
 Total Area: 55.0 m<sup>2</sup>



© Ian Francis Photography

This floor plan is intended as a guide only. Layout dimension are approximate only. No representation or warranties of any nature whatsoever are given or intended. Any person using this information should rely on their own enquiries.

# 937 Maleny Montville Road BALMORAL RIDGE

**MAIN RESIDENCE  
FIRST FLOOR**



**MAIN RESIDENCE  
GROUND FLOOR**



**Approximate Areas**

Internal:	219.0 m <sup>2</sup>
External:	179.0 m <sup>2</sup>
Garage:	22.9 m <sup>2</sup>
<b>Total Area:</b>	<b>420.9 m<sup>2</sup></b>

This floor plan is intended as a guide only. Layout dimension are approximate only. No representation or warranties of any nature whatsoever are given or intended. Any person using this information should rely on their own enquiries.

© Ian Francis Photography