



275 Witta Road Witta QLD

3 2 2

Maple View - Country Style Chic in Beautiful Witta!

Maple View is a gorgeous, romantic home which has been featured in both Country Style and Real Living magazines, that gives you an idea on the special magic on offer here. Stunning bespoke home with chalet type features, soaring vaulted ceilings, loft bedrooms, grand feature windows and abundance of style throughout.

Maple trees grace the circular driveway which is framed by a white picket fence with an elegant white timber arbour at the entrance. Even the laundry, studio, garden shed and chicken coop are in keeping with the nostalgic style of this gorgeous home. Set amongst pretty and private gardens with lovely old-world trees, on just over one acre, there is

**Type** : House  
**Building Size** : 159.6 sqm  
**Land Size** : 4047 sqm  
**View** : <https://www.brantproperty.com.au/sale/qld/south/witta/residential/house/6983255>



**Susan Brant**  
0428 573 170



**Dee Bernhardt**

[For full version visit the website](https://www.brantproperty.com.au)

# 275 Witta Road WITTA



MAIN HOUSE GROUND FLOOR



MAIN HOUSE 1ST FLOOR

## Approximate Areas

Internal: 142.2 m<sup>2</sup>  
 External: 17.4 m<sup>2</sup>  
 Total Area: 159.6 m<sup>2</sup>

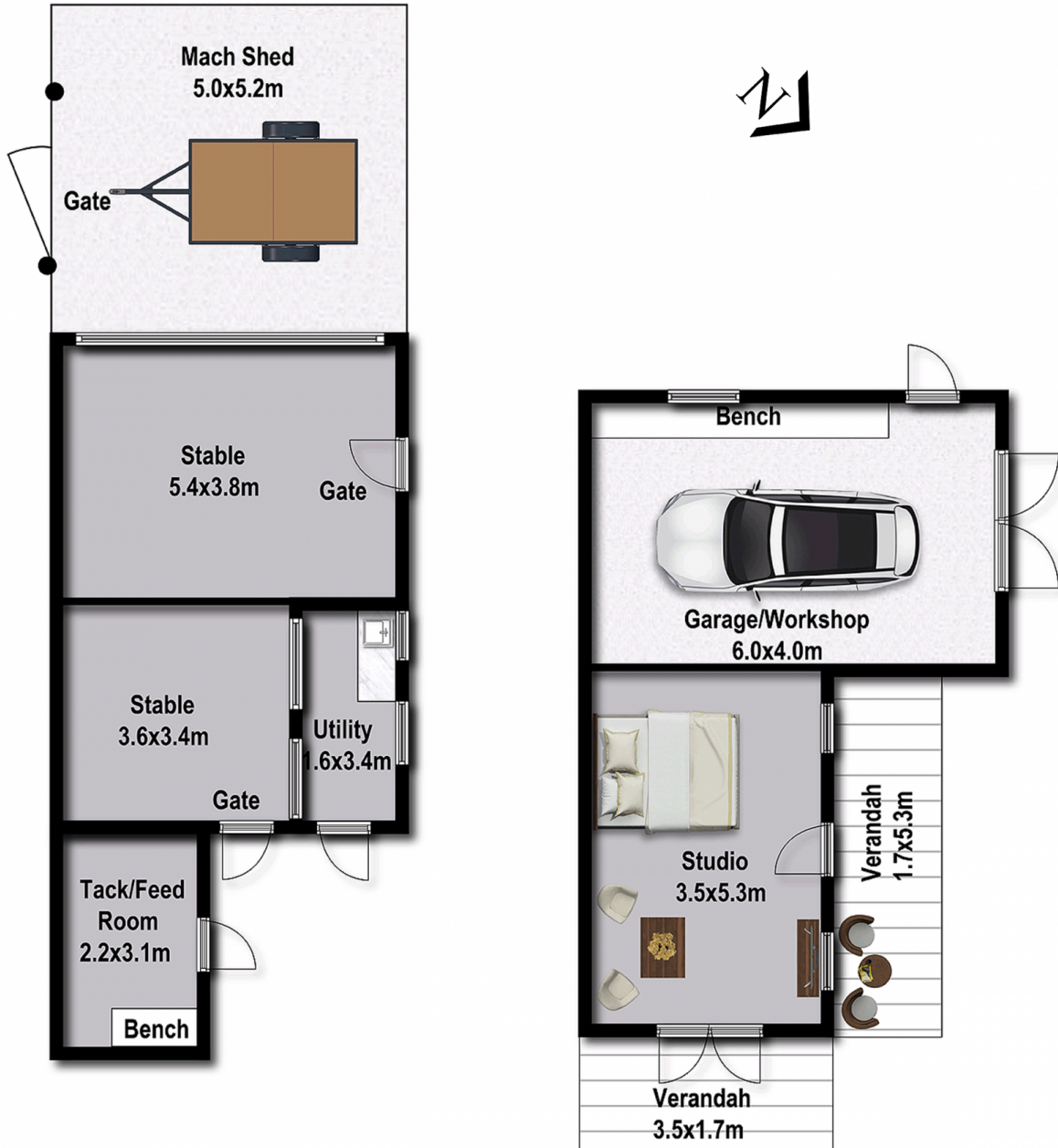
© Ian Francis Photography

# 275 Witta Road WITTA



This floor plan is intended as a guide only. Layout dimension are approximate only. No representation or warranties of any nature whatsoever are given or intended. Any person using this information should rely on their own enquiries.

# 275 Witta Road WITTA



**Approximate Areas**  
 Internal: 66.9 m<sup>2</sup>  
 External: 15.0 m<sup>2</sup>  
 Garage: 50.0 m<sup>2</sup>  
**Total Area: 131.9 m<sup>2</sup>**

This floor plan is intended as a guide only. Layout dimension are approximate only. No representation or warranties of any nature whatsoever are given or intended. Any person using this information should rely on their own enquiries.

© Ian Francis Photography

# 275 Witta Road WITTA

